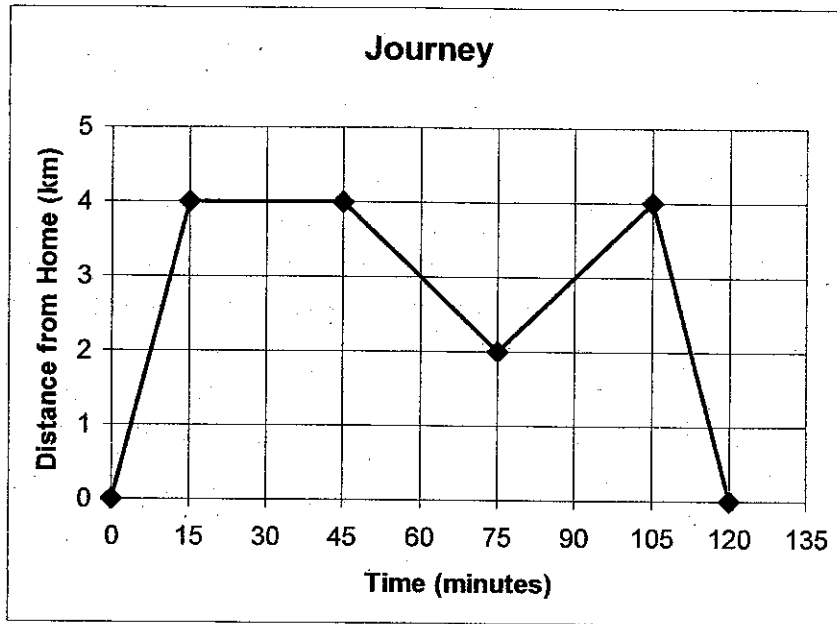


Part A

Using the graph, create a story that describes the two hour journey.



Make sure to include:

- all of the key features/events from the graph
- descriptions of each segment of the graph (fast, slow, away from/toward home)
- where does the journey start/end
- a title
- creative explanations for segments of the graph
- clear communication (including correct grammar, spelling, etc.)

EVALUATION:

/12 Key **Features** of Graph are Represented in Story (2 marks each)

/2 /2 /2 /2 /2 /2

/4 Story

- /1 Title and Presentation
- /1 Grammar and Spelling
- /1 Clear Communication
- /1 Creativity

You may refer to PART B for a sample story, but DO NOT feel that you must use the same ideas. Remember, BE CREATIVE!!!

Part B

Using the story, create a graph that depicts the **two hour** journey.

Walking Seven

Ms Porter and her dog, Seven, are at home. They are going to meet Seven's doggy friend Pebbles to go for a walk. They are late to meet Pebbles, so they jog the 4 kilometres to Pebbles' house and get there in 30 minutes. Pebbles and Seven play in the backyard at Pebbles' house for 30 minutes. Then they walk back towards Seven's house to their favourite park. It takes 15 minutes to walk the 1 kilometre to this park. They stop at the park (which is 3 kilometres from Seven's house) to play for 30 minutes. After play time, they all walk back to Pebbles' house in 15 minutes.

The End

Make sure to include in the graph:

- key events from the journey
- clear, straight lines (use a ruler!)
- a meaningful title (please do NOT use "Journey")
- clearly labeled axes (with units)
- well-thought out grid lines

EVALUATION:

/12 Key **Features** of Story are Represented in Graph (2 marks each)

/2 /2 /2 /2 /2 /2

/4 Graph

- /1 Title and Presentation (has a title, ruler used, etc.)
- /1 Axes labeled correctly and clearly
- /1 Grid lines chosen carefully and clearly labeled
- /1 Grammar and Spelling

You may refer to the graph in PART A as a sample.

Please submit this sheet with your project.